

# Protero

## **DUMP N' GO MODEL RC 212 CUB CADET**

---

8722 E Research Center Rd.  
New Hope, MN 55128  
Ph: 763-535-4038  
Fax: 763-535-4633



RC 212 shown on John Deere Model 115  
Fits models: 1000 and 1500 series

---

## **ASSEMBLY INSTRUCTIONS AND PARTS LISTS**

# SAFETY

Congratulations on purchase of your Protero RC 212 Dump N Go grass catcher!  
You will stay on your tractor seat and enjoy a beautiful lawn for a long time to come.

Please read and be familiar with the operator's manuals that came with your mower and grass catcher. These manuals provide information for the safest and most effective use of your equipment. If you do not have operator's manuals for your mower and for your collection system, please contact your dealer to obtain them.

The Dump N Go catcher simply replaces the bag-type catcher in your collection system; so all safety guidelines in your operator's manual for the collection system apply to your Dump N Go as well. Do not operate, nor allow others to operate your Dump N Go catcher without thorough review and training of these important safety guidelines.

For your convenience, here are some basic safety guidelines that your operator's manuals will cover:

## **Before you operate your material collection system:**

- Understand the machine safety labels, and pay attention to the symbols for DANGER, WARNING, and CAUTION.
- WARNING: Objects may be thrown from mower.
- Do not open catcher while blades are turning.
- Shut off engine if getting off mower to inspect catcher.
- Operate mower with complete bagging attachment in place
- If necessary, use proper front counterweight. Remove counterweight when the material collection system is removed.
- Hopper extends beyond vehicle. Be aware of surrounding objects when making short turns.
- Do not operate material collection system unless entire grass catcher is fastened in place with the hopper cover securely latched.
- Do not let anyone ride on the mower or material collection system. Riders are subject to injury such as being struck by foreign objects or being thrown off. Riders may obstruct the operator's view and cause a collision.

## **Before you inspect catcher or unplug chute:**

- Stop mower.
- Disengage mower PTO.
- Stop engine.

## **Before you back up:**

- Stop machine.
- Look behind hopper for children or pets.

## **Operate safely on slopes:**

- Dump catcher when half full.
- Do not operate on steep slopes.
- Before you turn, slow down.
- Avoid holes, rocks, and roots.
- Mow up and down - not across slopes.
- Do not park mower with material collection system on slopes.

### **Parking Safely:**

- Stop machine on a level surface, not a slope.
- Disengage PTO.
- Wear close fitting clothing and safety equipment appropriate for the job.
- Always wear safety goggles or safety glasses with side shields when operating the machine.
- Wear a suitable protective device such as earplugs. Loud noise can cause impairment or loss of hearing.
- Do not wear radio or music headphones. Safe service and operation requires your full attention.

### **Practice Safe Maintenance:**

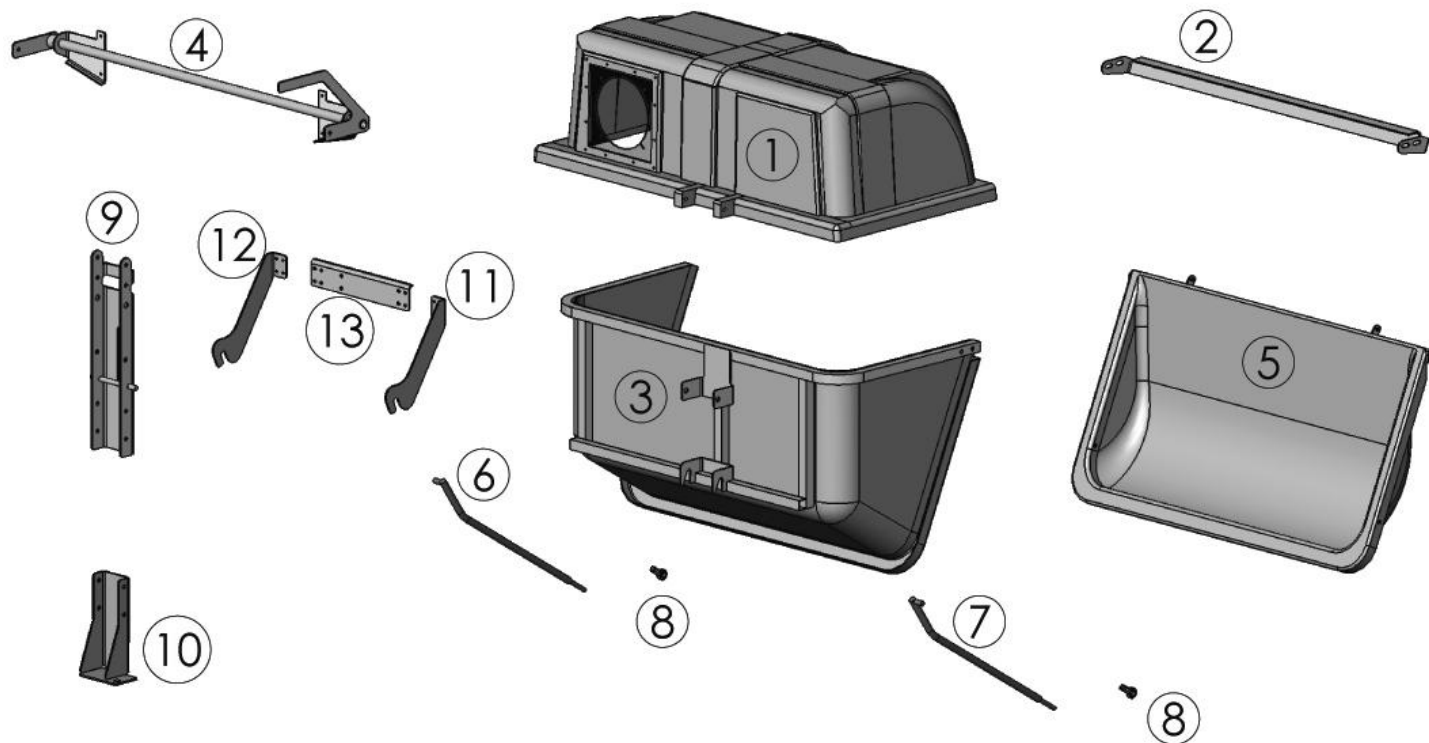
- Understand service procedures before doing work. Keep area clean and dry.
- Never service or adjust any part of the collection system while the mower is moving. Keep safety devices in place and in working condition. Keep hardware tight.
- Keep all parts in good condition and properly installed. Fix damage immediately. Replace worn or broken parts. Remove any buildup of debris.
- Unauthorized modifications to the collection system may impair its function and safety. Do not tamper with its original design.

# INCLUDED PARTS AND HARDWARE:

## TOOLS NEEDED:

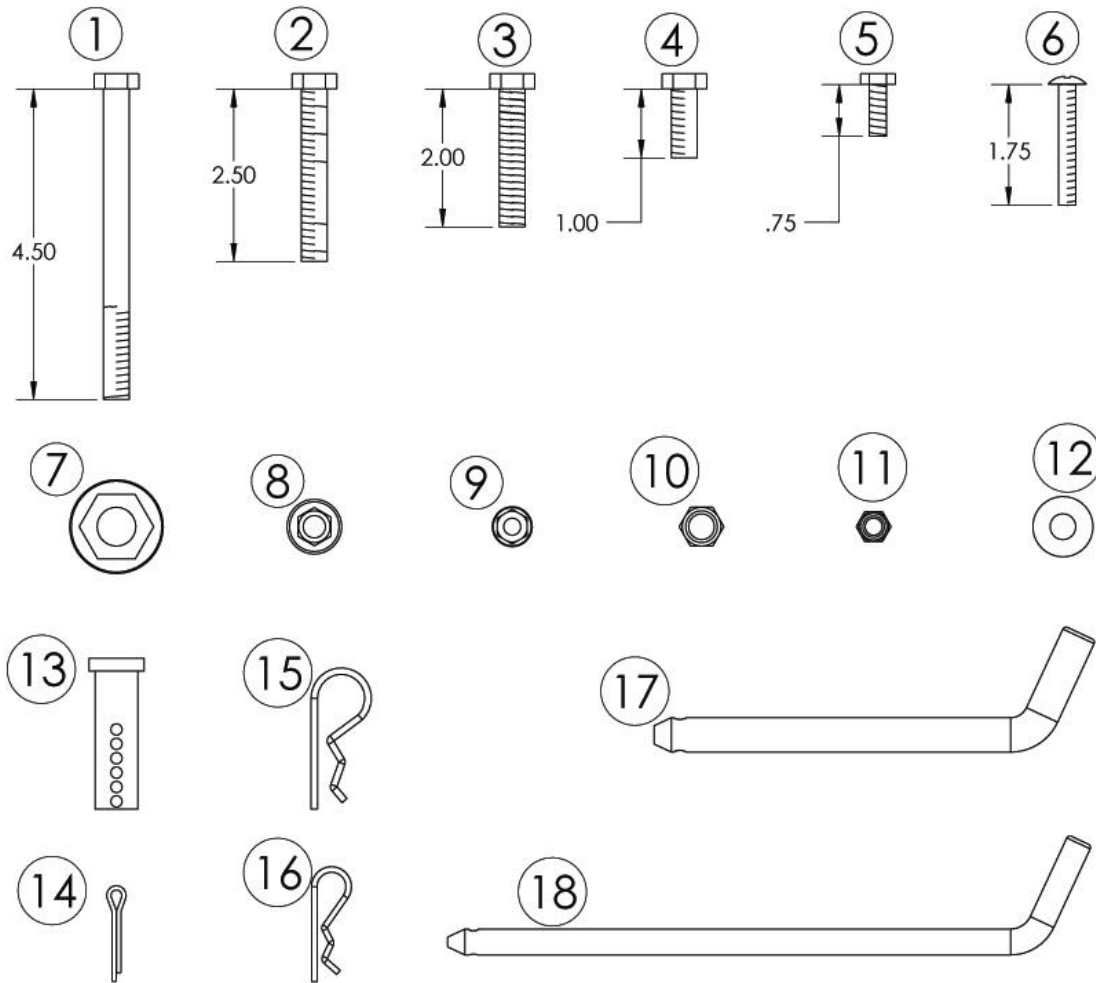
- Phillips head screwdriver
- 7/16" wrench (7/16" socket and ratchet suggested)
- Two, 9/16" wrenches (9/16" sockets and ratchets suggested)
- Pliers

## PARTS:



ITEM #	PART #	DESCRIPTION	QUANTITY
1	212110	212 HOOD ASSEMBLY	1
2	212140	CATCHER HINGE ASSEMBLY	1
3	212150	RC 212 CATCHER BODY ASSEMBLY	1
4	212155	DUMP LEVER ASSEMBLY	1
5	212160	DOOR ASSEMBLY	1
6	212171	HINGE ROD RIGHT	1
7	212172	HINGE ROD LEFT	1
8	212175	3/8" BALL JOINT ROD END	2
9	212176	CHANNEL MOUNT ASSEMBLY	1
10	212381	CC 1000/1500 BOTTOM MOUNT	1
11	212382	CC 1000/1500 LEFT MOUNT	1
12	212383	CC 1000/1500 RIGHT MOUNT	1
13	212384	CC 1000/1500 CROSSPLATE	1

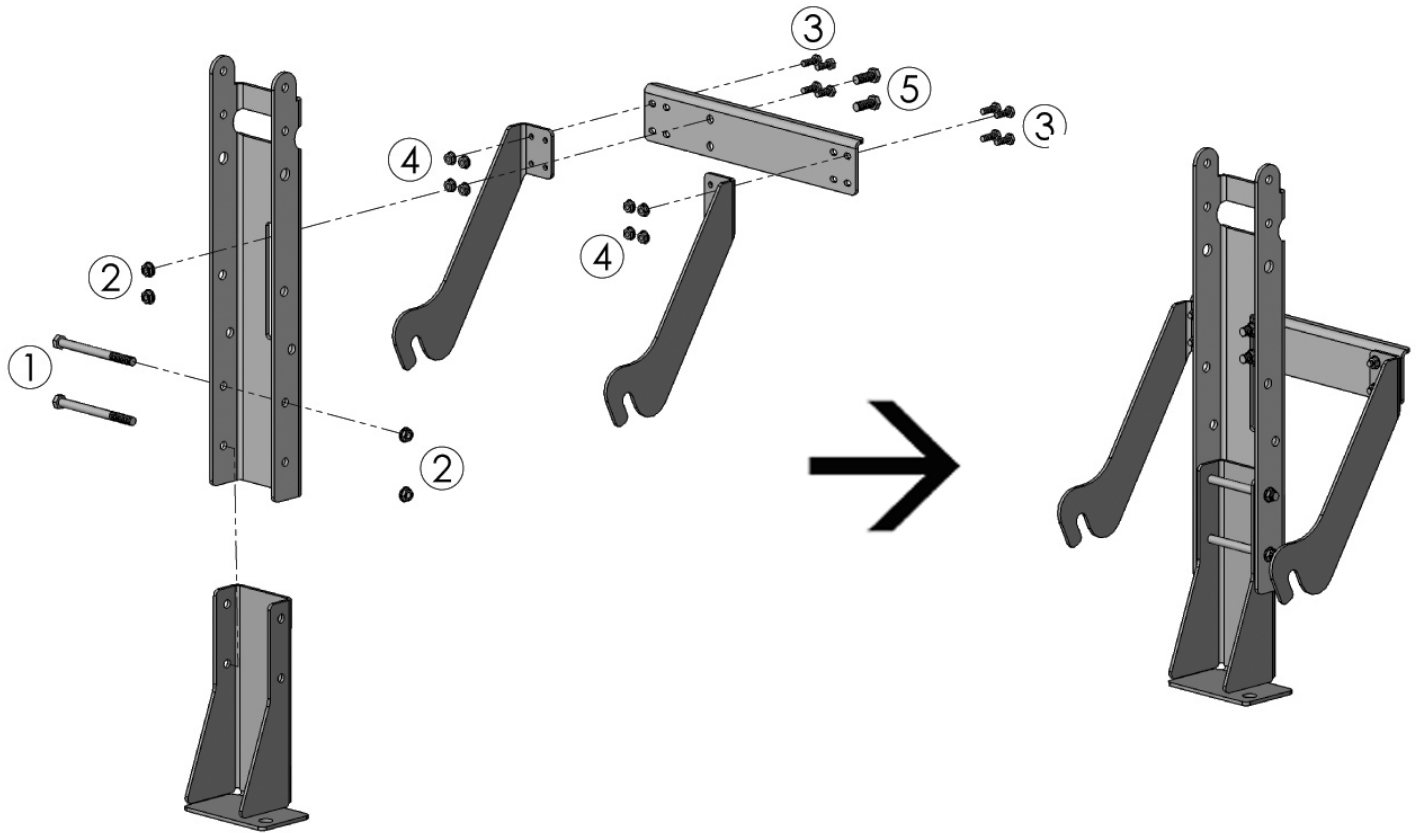
# **HARDWARE INCLUDED:**



ITEM #	PART #	DESCRIPTION	QUANTITY
1	BOLT HH 38 412	3/8" x 4 1/2" HEX HEAD BOLT	2
2	BOLT HH 38 212	3/8" x 2 1/2" HEX HEAD BOLT	2
3	BOLT HH 38 2	3/8" x 2" HEX HEAD BOLT	4
4	BOLT HH 38 1	3/8" x 1" HEX HEAD BOLT	4
5	BOLT HH 14 34	1/4" x 3/4" HEX HEAD BOLT	8
6	BOLT PT 14 134	1/4" x 1 3/4" PHILLIPS TRUSS HEAD BOLT	4
7	FLANGE NUT 58	5/8" SERRATED FLANGE NUT	2
8	FLANGE NUT 38	3/8" SERRATED FLANGE NUT	4
9	FLANGE NUT 14	1/4" SERRATED FLANGE NUT	8
10	NUT NYL 38	3/8" NYLOCK NUT	8
11	NUT NYL 14	1/4" NYLOCK NUT	4
12	WASHER 38	3/8" FLAT WASHER	20
13	CP 625 2	5/8" x 2" CLEVIS PIN	1
14	COTP 125 1	COTTER PIN 1/8" x 1"	2
15	BP 228	BRIDGE PIN 0.930" x 2" ZINC	1
16	BP 233	BRIDGE PIN 0.930" x 1 1/8" ZINC	2
17	BNTP 12 5	BENT PIN 1/2" x 5 EFF HOLE ZINC	1
18	BNTP 38 725	BENT PIN 3/8" x 7 1/4" EFF HOLE ZINC	1

# ASSEMBLY:

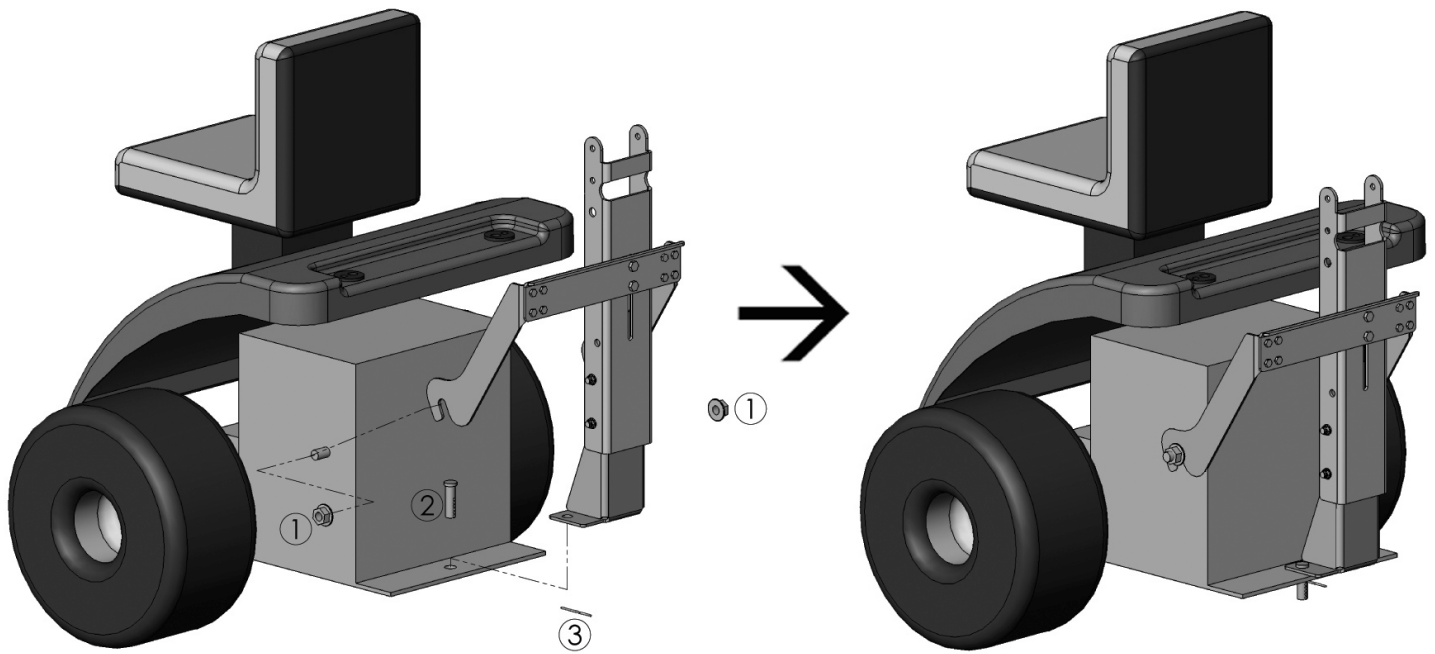
## STEP 1:



- (1) 3/8" diameter, 4½" long hex head bolt (2 used)
- (2) 3/8" serrated flange nut (4 used)
- (3) 1/4" diameter, 3/4" long hex head bolt (8 used)
- (4) 1/4" serrated flange nut
- (5) 3/8" diameter, 1" long hex head bolt (2 used)

- Place *Bottom Mount* into the *Channel Mount* as shown. Align both sets of holes and insert the 3/8" diameter, 4½" long bolts.
- Use the 3/8" serrated flange nuts to secure mounts together.
- Position the *Left and Right Mounts* on each end of the *Crossplate*. Use above picture for reference.
- Insert the 1/4" diameter, 3/4" long bolts through each of the holes.
- Fasten parts together with 1/4" serrated flange nuts. (*May not want to fully these nuts until mounted to mower in STEP 2*)
- Place the *Crossplate* against the back of the *Channel Mount* and align the two remaining holes on the *Crossplate* with the long slot on the *Channel Mount*.
- Insert the 3/8" diameter, 1" long bolt through the two holes and slot.
- Use the 3/8" serrated flange nuts to fasten *Crossplate* to *Channel Mount*. (*May not want to fully these nuts until mounted to mower in STEP 2*)

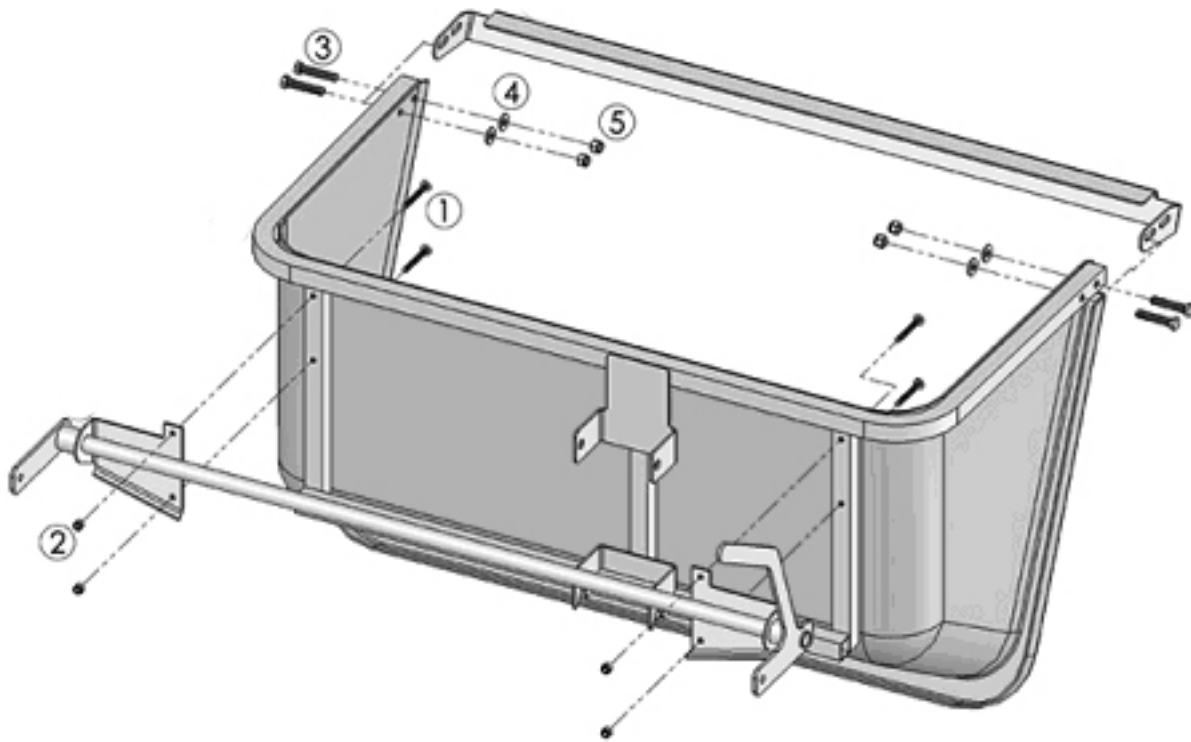
## STEP 2:



- (1) 5/8" serrated flange nut (2 used)
- (2) 5/8" diameter, 2" long clevis pin (1 used)
- (3) Bridge pin 228 (1 used)

- First, position the slots of both the *Left and Right Mounts* around bolts coming out of the sides of the rear of the mower.
- Next align the hole on the bottom plate of the *Bottom Mount* with the hole of the Hitch pin plate.
- Insert the Clevis pin into the *Bottom Mount* hole and Hitch pin hole.
- Secure the Clevis pin the correct Bridge pin.
- Secure the *Left and Right Mounts* with the 5/8" serrated flange nuts.
- Adjust and fully tighten the nuts and bolts on the *Crossplate*.

**STEP 3:**

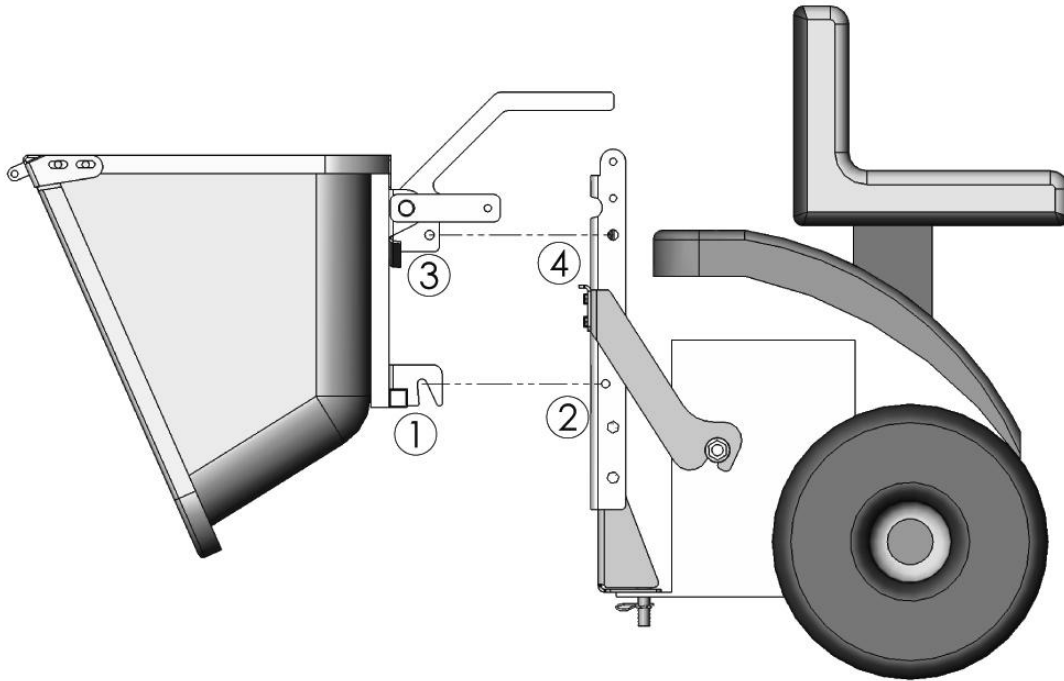


- (1) 1/4" diameter, 1 3/4" long phillips truss head bolt (4 used)
- (2) 1/4" nylock nut (4 used)
- (3) 3/8" diameter, 2" long hex head bolt (4 used)
- (4) 3/8" washer (4 used)
- (5) 3/8" nylock nut (4 used)

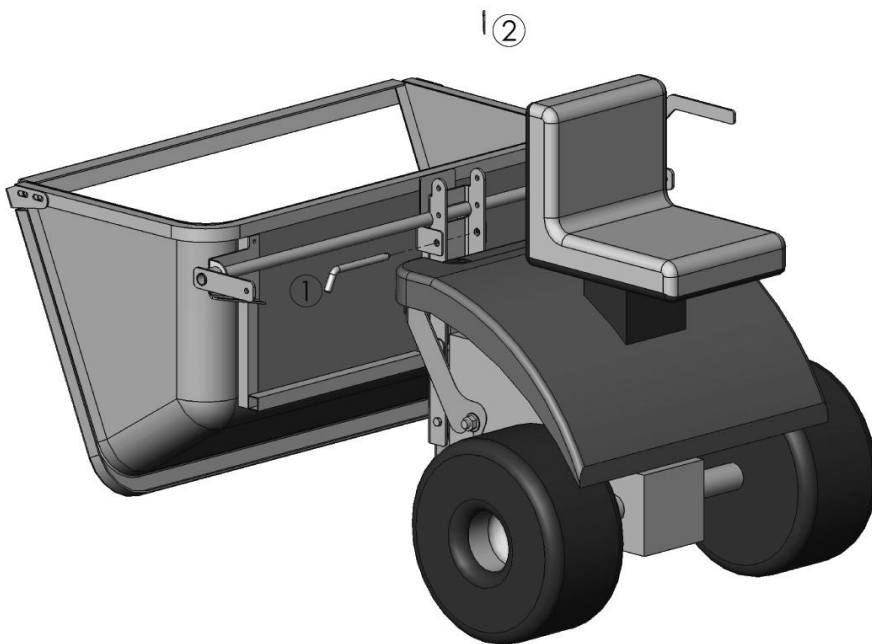
- Position the *Dump Lever Assembly* to the frame of the *RC 212 Catcher Body* lining up the holes.
- From the inside, insert the phillips trust head bolts through the holes. Fasten with 1/4" nylock nuts.
- Position the slotted holes of the *Catcher Hinge Assembly* to the holes on the sides of the *RC 212 Catcher Body*.
- Insert the 3/8" diameter, 2" long bolts through the *Catcher Hinge Assembly*.
- Place 3/8" washers on the opposite side of the bolts, against the plastic body and fasten with 3/8" nylock nuts.



**STEP 4:**



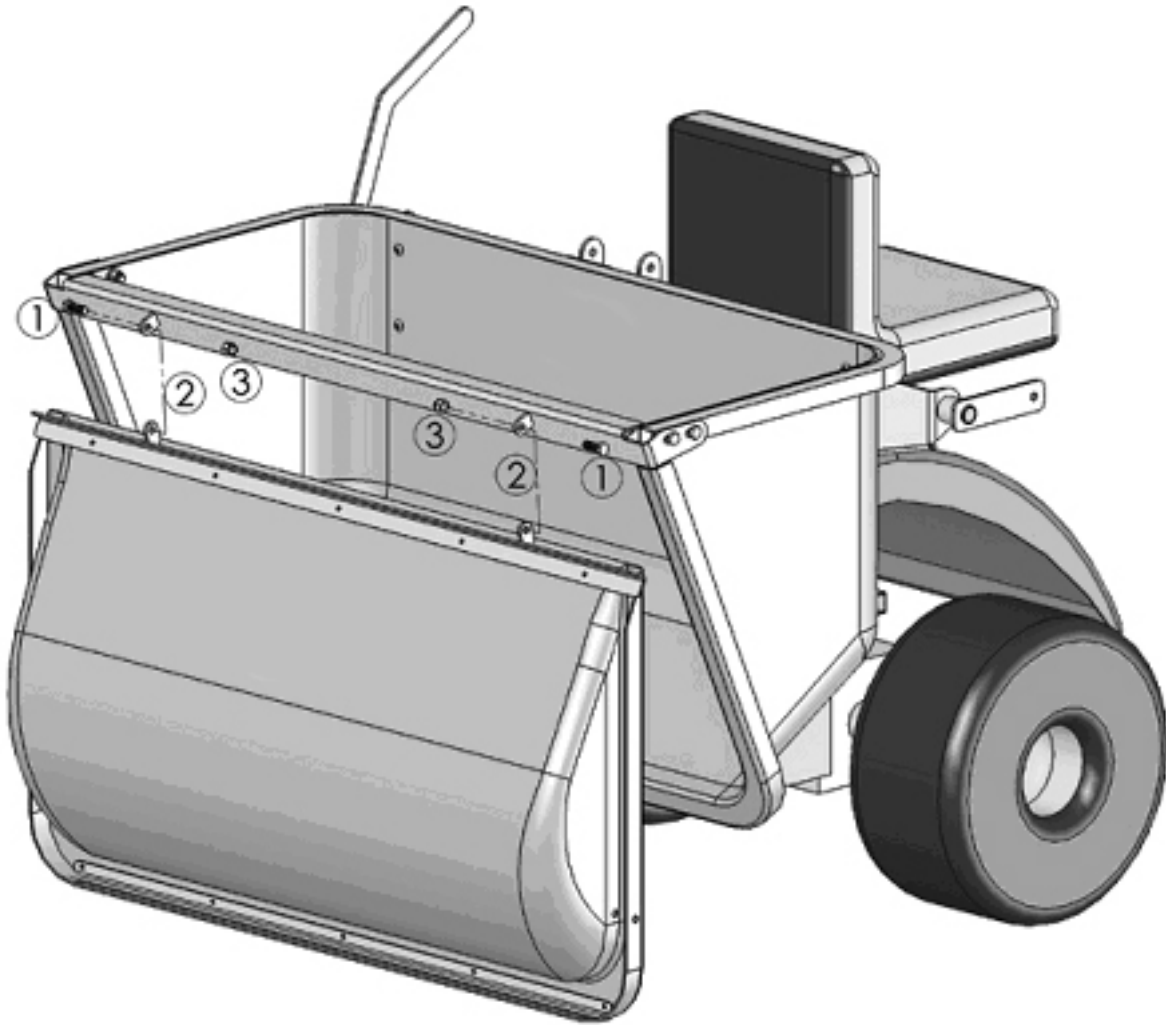
- Place the bottom slotted bracket (1) around the mount assembly and onto the rod (2) below *Crossplate and Left & Right Mount* assembly.
- Position the top bracket holes (3) around the *Channel Mount* assembly and align the holes (4).



- (1) 1/2" diameter, 5" long bent pin
- (2) Bridge pin 233 (1 used)

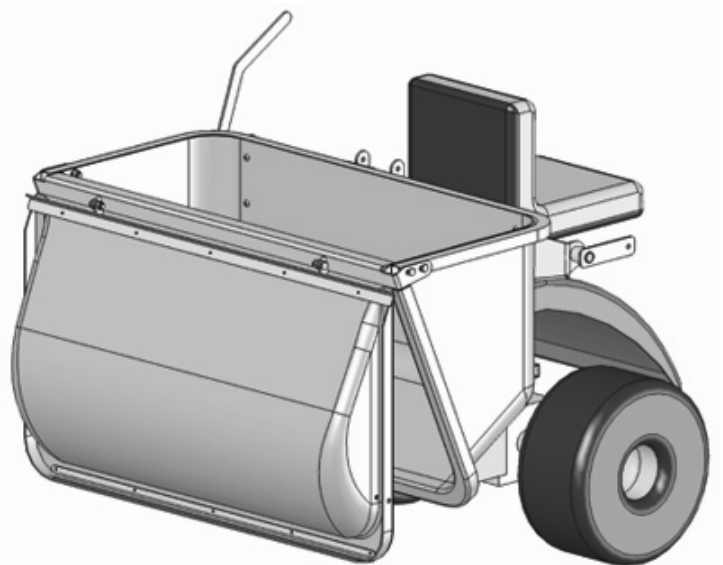
- Insert the 5" bent pin (1) through the top bracket and *Mount* assembly (2).
- Insert the Bridge pin (3) into the small hole in the bent pin (1).

**STEP 5:**

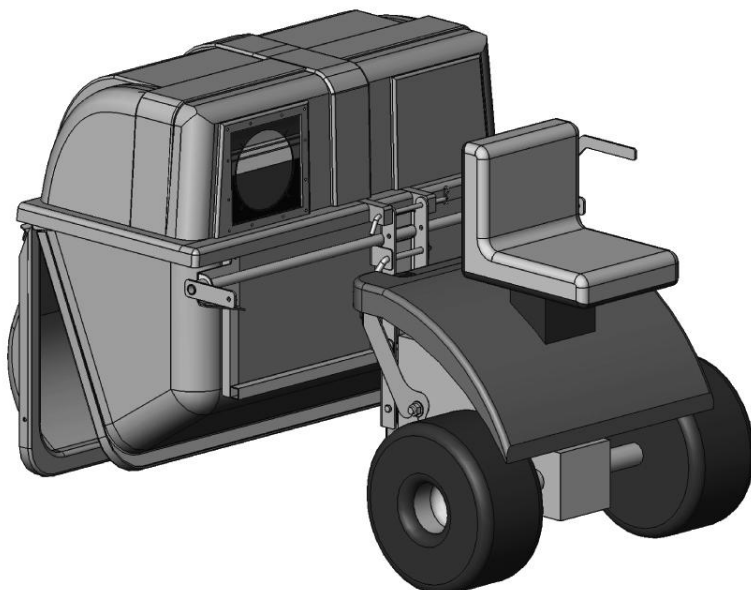
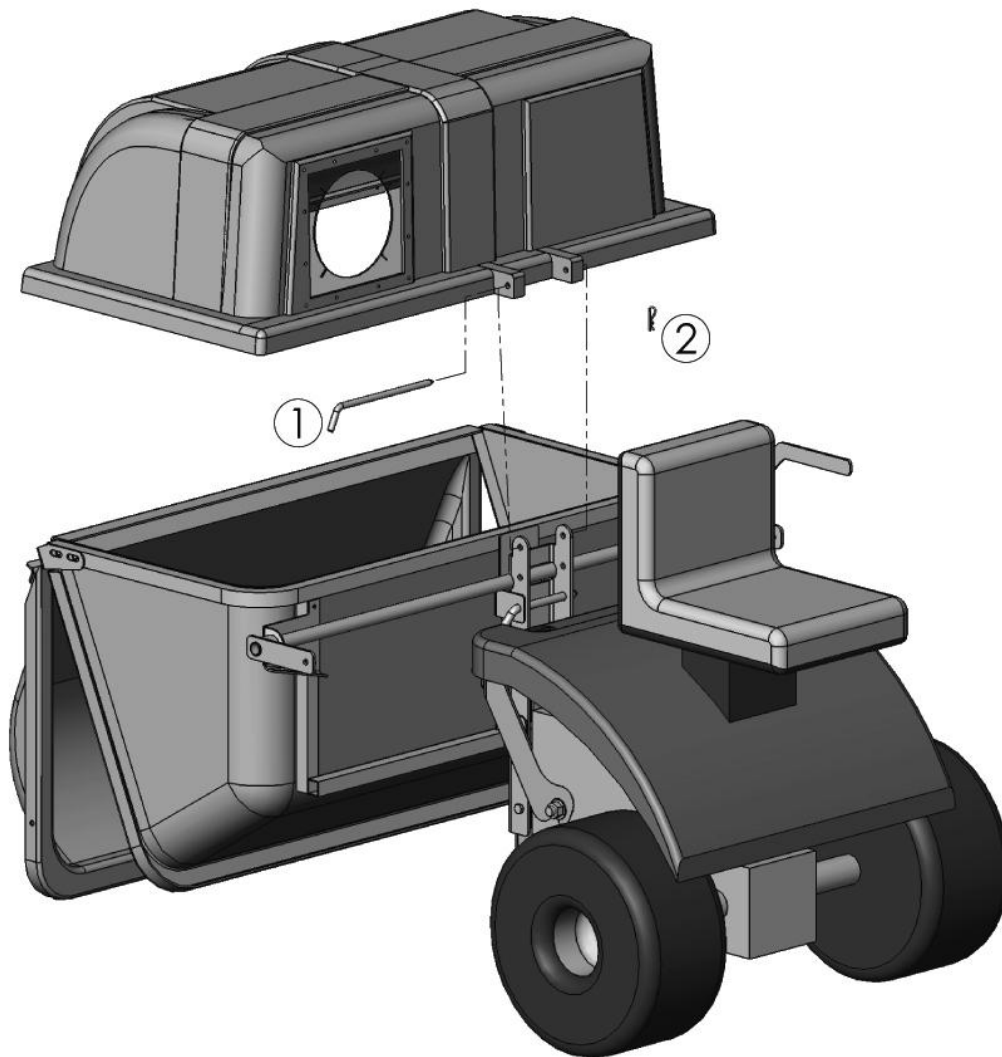


- (1) 3/8" diameter, 1" long bolt (2 used)
- (2) Hinges (on *Door Assembly* & *Catcher Hinge Assembly*)
- (3) 3/8" nylock nut (2 used)

- Line up the hinges on *Door Assembly* with the hinges on the *Catcher Hinge Assembly*.
- Keep the hinges on the *Door Assembly* to the right of hinges on the *Catcher Hinge Assembly*.
- Through each set of hinges insert 3/8" diameter bolt, 1" long bolts.
- Fasten the bolts with 3/8" nylock nuts.



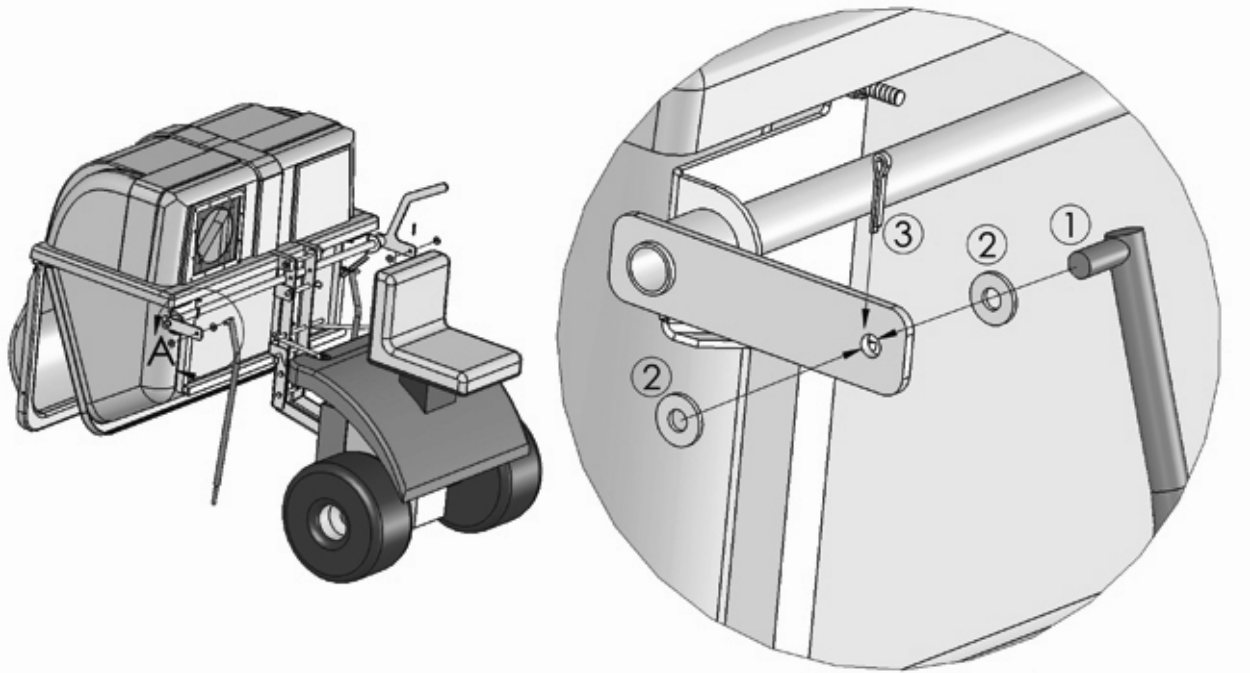
**STEP 6:**



- (1) 3/8" diameter, 7¼" effective length, bent pin (1 used).
- (2) Bridge pin 233 (1 used)

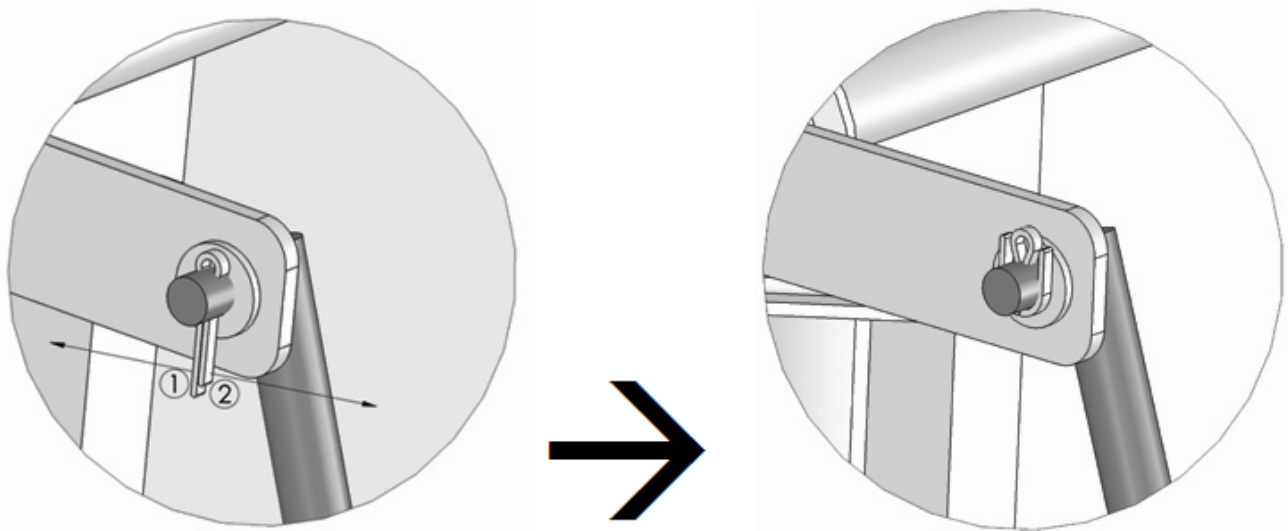
- Position the *Hood Assembly* on the *RC 212 Catcher Body*.
- Insert the 7¼" long bent pin through the top holes of the *Channel Mount Assembly*.
- Secure the Bent pin with Bridge pin 233.

**STEP 7:**



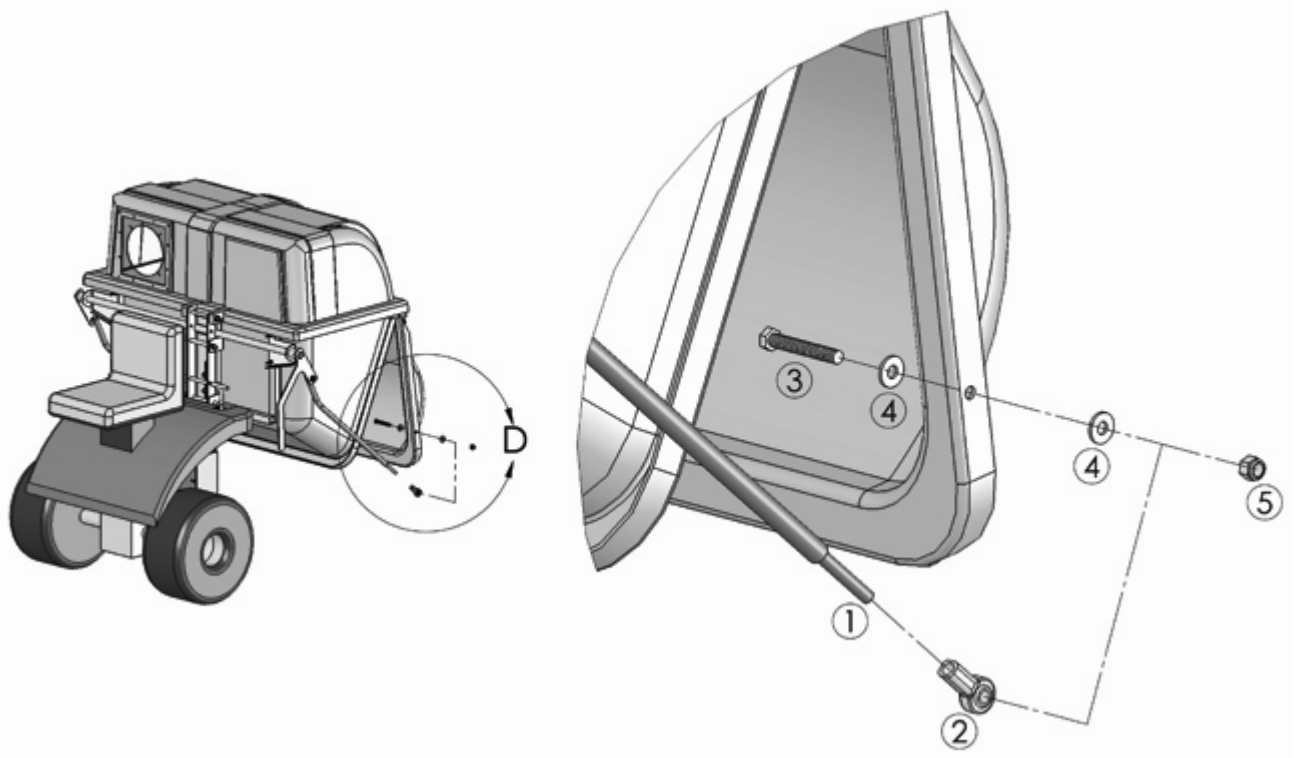
- (1) Hinge Rod – Right (Hinge Rod – Left not pictured in upper right picture)
- (2) 3/8" washers (4 used, 2 for each side of the *Dump Lever Assembly*)
- (3) 1/8" Cotter Pin, 1" long (2 used, for each side of the *Dump Lever Assembly*)

- On the left side of the *Dump Lever Assembly* (relative to the picture above), insert *Hinge Rod –Right* through a 3/8" washer and the hole shown in the *Dump Lever Assembly*.
- Place another washer over the end of the *Hinge Rod* coming through the hole. Fasten the *Hinge Rod* in place with a Cotter Pin.



- Use pliers to bend out the ends of the Cotter pin around the end of the *Hinge Rod*.
- ***Repeat the instructions above for the opposite side of the dump lever assembly.***

**STEP 8:**



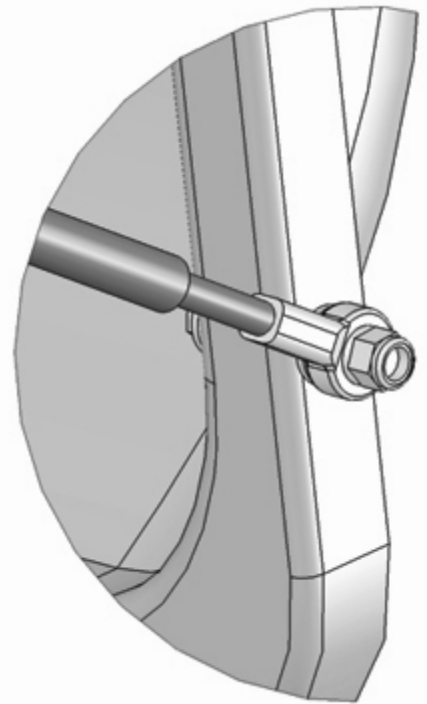
- (1) 3/8" diameter, 2½" long hex head bolt (2 used, 1 for each side of the *Door Assembly*).
- (2) 3/8" washers (4 used, 1 for each side of the *Door Assembly*)
- (3) *Rod End* (2 used, 1 for each side of the *Door Assembly*)
- (4) 3/8" nylock nut

- Screw *Rod End* onto the straight end of the *Hinge Rod*. Does not necessarily need to be tight. Adjustments may be required.
- Insert a 3/8" diameter, 2½" long bolt through a 3/8" washer from inside the *Catcher Door Assembly*.
- Place a washer and *Rod End* on the outside of the door over the hole and insert the bolt thru the holes.
- Fasten with a 3/8" nylock nut.
- ***Repeat the instructions above for the opposite side of the catcher door.***

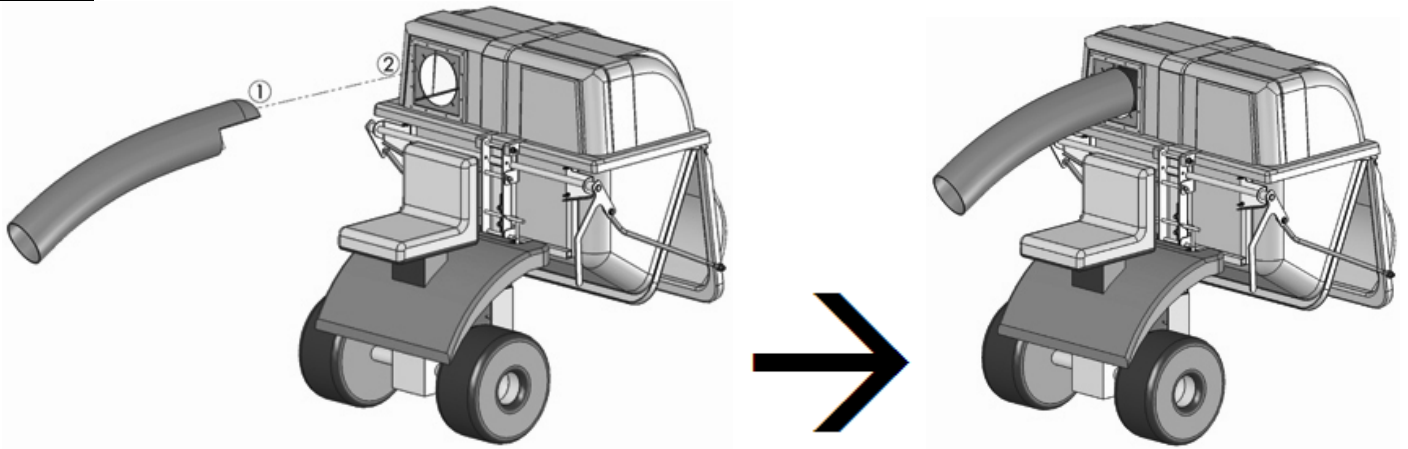
***NOTE: Extra washers are provided to space the rod ends further from the door if necessary.***

***Rod ends may need adjustment by either screwing or unscrewing to change the overall length of the rod. This is required for good closure of the catcher door to ensure a proper seal.***

***Dump lever handle may need to be bent out slightly to clear mower fender when operating the dump lever.***



**STEP 9:**



- Attach the intake (1) from the mower deck into the intake seal (2).

## **LIMITED WARRANTY**

We warrant each new Dump N Go catcher to be free from manufacturing defects in normal service for a period of 12 months from the purchase date.

Our obligation under this warranty is expressly limited, at our option, to the replacement or repair at PROTERO Inc. (New Hope, MN), or at a service facility designated by us, of such part or parts as inspected shall disclose to have been defective. This warranty does not apply to defects caused by improper installation, damage, or unreasonable use (including failure to provide reasonable and necessary maintenance).

All warranty claims must be pre-approved. We shall not be liable for any claims or fees not pre-approved. Replacement parts will be sent no charge via UPS Ground. Expedited shipping services are available for an additional fee.

This warranty is void should the product be repaired or modified in any way not authorized by PROTERO Inc.